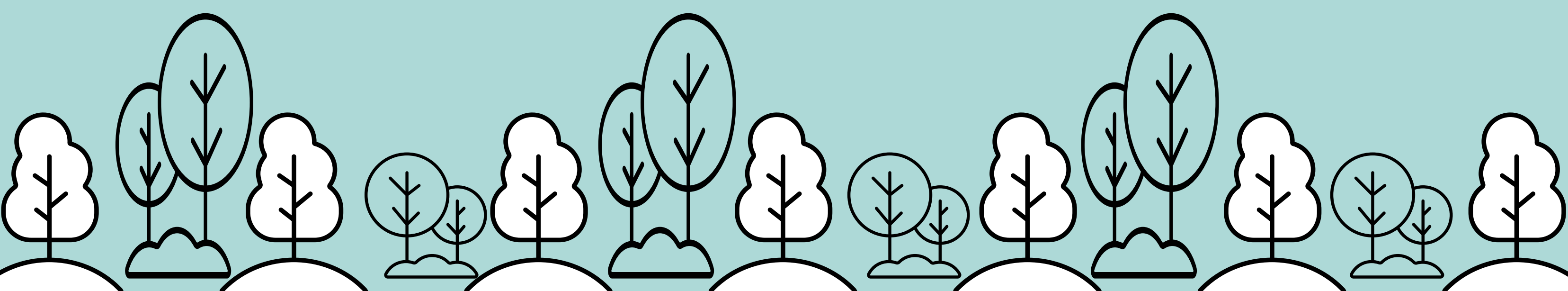




RESILIENT SUCCESS STORIES

...TRUE LIFE STORIES FROM THE KANSAS CITY REGION!

KOMPASS KAPITAL





RESILIENT SUCCESS STORIES

...TRUE LIFE STORIES FROM THE KANSAS CITY REGION!

KOMPASS KAPITAL

Kompass Kapital invested in an existing five-story 91,200 square-foot office building for their new headquarters located in Overland Park. Investing in an existing building reduced embodied carbon compared to building a new structure from the ground up.

The focus from the start was on sustainability, energy efficiency, water reduction and the environmental health of the building's occupants. The project is an example of what business leaders can do to demonstrate value for employees and the community at-large. Builders went back to the studs and included new glazing, walls, and insulation. The project incorporated energy efficient strategies such as LED lighting with reduced Lighting Power Density, efficient HVAC system with occupancy controllability and enhanced refrigerant management and improved envelope design and shading devices on windows. There is also a backup generator for power needs. Rainwater capture is used in bathroom fixtures and irrigation. More than 75% of all demolition and construction waste was diverted from the landfill. Eco-friendly interiors demonstrate across all related LEED credits. Other strategies to address occupant health involved the location of the office within walkable distance to nearby services, bike racks, a shower and gym onsite, and air quality testing prior to occupancy. The project was awarded LEED-Gold certification with 65 points.

